



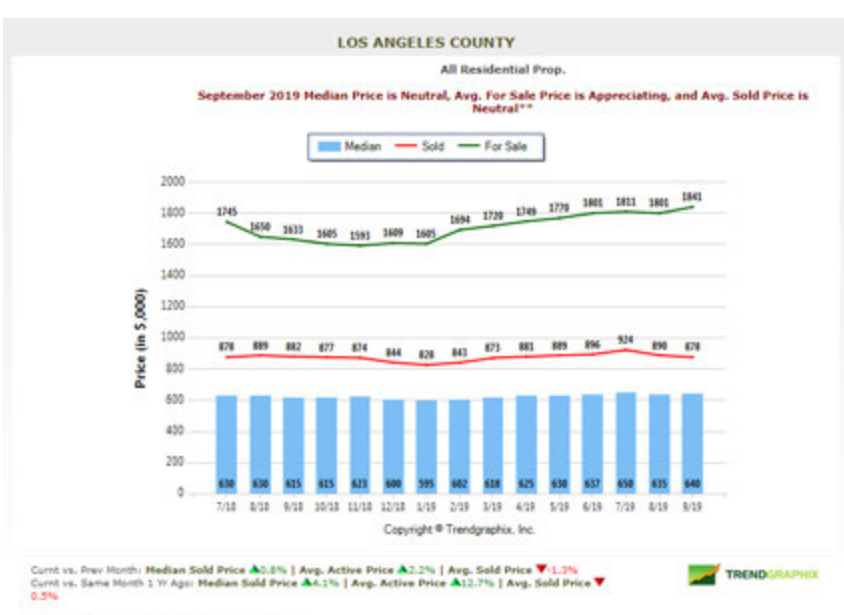
Vista

Sotheby's
INTERNATIONAL REALTY



Polished
October 2019

Fall is here and with it comes the best time of year. We are blessed to still have warm summer-like days, less crowds and the kids are back in school! Take a moment to relax before the holiday season kicks into full gear. Unlike the typical excitement our city is known for, the current *for sale* vs. *sold* prices in L.A. County for September 2019 are steady. Take a deeper dive into each segmented market, and you'll notice that for the most part the same trend continues. Click the city names below the chart to see data from your neighborhood.



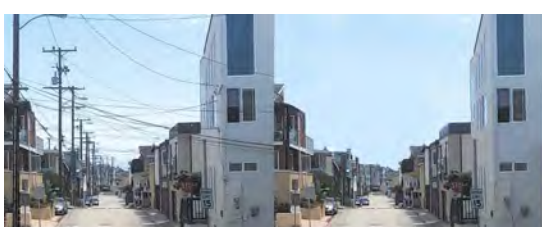
[El Segundo](#) [Hawthorne](#) [Hermosa Beach](#) [Lomita](#) [Long Beach](#)
[Manhattan Beach](#) [Marina del Ray](#) [Playa Vista](#) [Palos Verdes Estates](#)
[Redondo Beach](#) [Rolling Hills Estates](#) [Rancho Palos Verdes](#)
[San Pedro](#) [Torrance](#) [Westchester](#)

So what does all of this information mean for you? Buyers and sellers can enjoy a bit of predictability, and not so much of the unknown. If you have any questions about how your home fits into this equation, please do not hesitate to give me a call.



Rob McGarry
(310) 463-8488
Rob@BeachHomeBroker.com
DRE# 01356525

Download my personal app where you can search for homes and contact me directly.



Undergrounding passes in El Porto
[Click here to read the full article.](#)



\$225,000 Homes in Maine, Virginia and West Virginia
[Click here to read the full article.](#)



Brexit Fracas puts off U.K. house sellers in September
[Click here to read the full article.](#)



For those seeking market data
[Click here to read the full article.](#)



Vista | ELEVATE
For the home that needs to be refreshed

